

❧ ❧ PROGRAM

INAUGURATION
OF THE
PRESIDENT AND VICE-PRESIDENT
OF THE
UNITED STATES



CEREMONIES
AT
THE NATIONAL CAPITOL

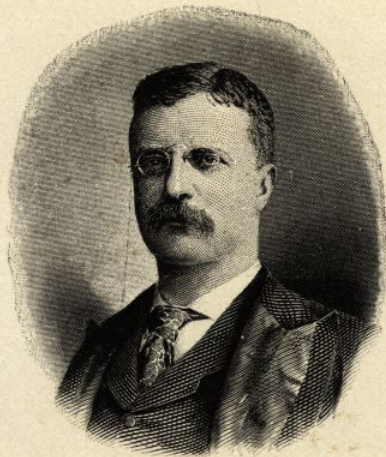
MARCH FOURTH

NINETEEN HUNDRED
AND ONE . . .



Program
for the
Inauguration
of the
President
and
Vice-President
of the
United States
March 4
1901





... PLATFORM TICKETS ...

.. Tickets to the platforms on the north and south of the center platform, designated as A and B, DO NOT ADMIT TO THE CAPITOL BUILDING.

.. Those admitting to platform A must be presented at the foot of the marble steps on the east front of the Senate wing.

.. Those admitting to platform B must be presented at the foot of the marble steps on the east front of the House wing.



Program

FOR THE

Inauguration

OF THE

President and

Vice-President

OF THE

United States

March 4th

1901



ENTRANCE TO THE SENATE WING OF THE
CAPITOL.



NO PERSON will be admitted to the Senate wing of the Capitol, the Senate galleries, the floor of the Senate Chamber, or the inaugural platform without a ticket or card signed by the Committee of Arrangements, except Members of the Senate and elective officers, Members of the House of Representatives and elective officers, ex-Presidents and ex-Vice-Presidents, the Justices of the United States Supreme Court and officers (the clerk, reporter, and marshal), Heads of Executive Departments, the Lieutenant-General Commanding the Army and his aid, the Admiral of the Navy and his aid.

Tickets of admission and cards (except those for Members-elect) will be good only at the Senate bronze door (at the head of the marble steps on the east front of the Senate wing) and at the lower door under the arch beneath these marble steps.

Ticket holders presenting themselves at any other than these two entrances will be refused admission. This provision is necessary to protect the galleries for the use of those having tickets, and to prevent persons with or without tickets gaining admission through the halls leading from the rotunda and the crypt and occupying the galleries to the exclusion of the bona fide ticket holders.

All horses and carriages, except those used in conveying persons to the Senate wing of the Capitol, will be excluded from the north half of the Capitol grounds until after the conclusion of the inaugural ceremonies.

The two eastern doors of the Senate wing, as above described, will be open at 10 o'clock a. m. to those holding tickets and cards and entitled to admission.

In Room indefinite loan to Bulla 9/20/46

ENTRANCE TO THE GALLERIES OF THE SENATE
CHAMBER.

Senate Reserved Gallery. The section of the Gallery known as the Senate Reserved Gallery, on the eastern side, between the Ladies' Gallery and the eastern Reserved Gallery, will be set apart for the guests of the President, the President-elect, the Vice-President-elect, the President of the Senate pro tempore, and the families of the Speaker of the House of Representatives, the Supreme Court, and Cabinet Officers. Special tickets will be issued for this Gallery, and NO ONE will be admitted to it without such ticket.

Diplomatic Gallery. The Diplomatic Gallery will be reserved exclusively for the use of the families of the members of the Diplomatic Corps, and tickets of admission thereto will be distributed by the Secretary of State.

Press Gallery. The Press Gallery will be reserved exclusively for the Reporters of the Press. Tickets of admission thereto will be countersigned by the Chairman of the Press Committee, and will entitle the holders to proceed to the place reserved for the Press on the platform while the procession is forming and in advance of it.

All Other Galleries. All other galleries will be open to those holding gallery tickets without distinction or reservation. The Committee of Arrangements are determined that the tickets issued shall not exceed the capacity of the galleries, and therefore it will be impossible to allot more than four to each Senator and Senator-elect, or more than two to each Member, Delegate, and the elective officers of the House of Representatives.

As seats on the aisle steps and standing room in the galleries have to be utilized to accommodate even this number, gentlemen are requested to give ladies the precedence for the chairs.

Gallery Tickets. The gallery tickets allotted to the House of Representatives will be distributed by the Clerk of the House, to whom Members and Delegates should apply for their quotas, on or before March 1.

Coupons will be detached from gallery tickets at the entrances to the Senate wing of the Capitol by the Senate Doorkeepers.

All tickets to the galleries and all cards of admission to the floor of the Senate Chamber will also entitle holders thereof to places on the inaugural platform, and it will be impossible to admit any person to the platform who has not previously been admitted to the Senate wing of the Capitol.

ENTRANCE TO THE FLOOR OF THE SENATE
CHAMBER.

The doors of the Senate Chamber will be opened at 11 o'clock a. m. to those entitled to admission, as follows:

The President, the President-elect.
The Vice-President-elect.
Ex-Presidents and ex-Vice-Presidents.
The Chief Justice, Associate Justices, and Officers of the Supreme Court.
Senators-elect and ex-Senators.
Ambassadors and Ministers of the United States.
Ambassadors and Ministers of Foreign Countries who have been presented officially to the President.
Heads of the Executive Departments.
Members, Members-elect, and Elective Officers of the House of Representatives.
Governors of States and Territories.
The Lieutenant-General Commanding the Army and his aid.
The Admiral of the Navy and his aid.
The Lieutenant-General of the Army, retired.
Officers of the Army and Navy who, by name, have received the thanks of Congress.
Ex-Speakers of the House of Representatives.
Ex-Secretaries and ex-Sergeant-at-Arms of the Senate.
Judges of the Court of Appeals and of the Supreme Court of the District of Columbia.
Marshal of the District of Columbia.
Judges of the Court of Claims.
The Commissioners of the District of Columbia.
The Secretary of the Smithsonian Institution.
The Librarian of Congress.
The Architect of the Capitol and his Assistant.
The Superintendent of Public Buildings and Grounds.

The Clerk of the House of Representatives will distribute to Members-elect cards of identification, and they are requested to come with the Members of the House and enter the Senate Chamber at the south door.

The Secretary of State will distribute to Ambassadors and Ministers of Foreign Countries cards of admission to the Senate Chamber, and they are requested to enter at the Senate bronze door and to assemble in the Senate marble room, whence they will be shown to seats on the Senate floor.

The Sergeant-at-Arms of the Senate will distribute to all the others above named cards of admission to the Senate Chamber, and they are requested to enter at the Senate bronze door or the door under the arch beneath the bronze door.

Those entitled to admission to the floor of the Senate will be shown to their seats upon entering the Senate Chamber by those in attendance.

The Supreme Court, headed by its officers, will enter the Senate Chamber in a body at 11.45 a. m., and be announced.

The House of Representatives, headed by its officers, will enter the Senate Chamber in a body at 11.50 a. m., and be announced.

PROCEEDINGS IN THE

SENATE CHAMBER.

THE PRESIDENT, the President-elect, will be escorted to the Capitol by the Committee of Arrangements, and will enter the Senate wing by the bronze door. The President, the President-elect, will go directly to the President's room, where he will remain until he enters the Senate Chamber. Having been escorted to the Senate Chamber and introduced by the Committee of Arrangements, he will occupy the seat reserved for him in front of the Vice-President's desk. The Committee of Arrangements will occupy the seats on his left.

The Vice-President-elect will be accompanied to the Senate by the Committee of Arrangements, will enter the Senate wing at the bronze door, and will go to the Vice-President's room. From there he will go to the Senate Chamber, where the oath of office will be administered to him by the President of the Senate pro tempore, just before the adjournment of the present Senate.

After prayer by the Chaplain, the Vice-President will deliver his inaugural address and will administer the oath of office to the Senators-elect.

THE PROCESSION TO THE INAUGURAL
PLATFORM.



AFTER the organization of the Senate shall have been completed, those assembled in the Senate Chamber will proceed through the rotunda to the platform on the center portico of the Capitol in the following order, viz:

The Marshal of the District of Columbia and the Marshal of the Supreme Court.

Ex-Presidents.

Ex-Vice-Presidents.

The Chief Justice, Associate Justices, Clerk, and Reporter of the Supreme Court.

The Sergeant-at-Arms of the Senate.

The Committee of Arrangements.

The President, the President-elect.

Ambassadors to the United States.

Ministers Plenipotentiary.

The Vice-President and the Secretary of the Senate.

The Senate of the United States and ex-Senators.

The Sergeant-at-Arms and the Clerk of the House of Representatives.

Retiring Members, Members-elect, and Officers of the House of Representatives.

Heads of the Executive Departments.

Governors of States and Territories.

The Lieutenant-General Commanding the Army and his aid.

The Admiral of the Navy and his aid.

The Lieutenant-General of the Army, retired.

Officers of the Army and Navy who, by name, have received the thanks of Congress.

All other persons who have been admitted to the floor of the Senate Chamber, followed by those who have been admitted to the galleries.

The occupants of the galleries will be escorted by officers in charge to the platform in the following order:

The Diplomatic and galleries east of such gallery will proceed by the east stairway to the south side of the Senate Chamber, the right of the line halting and resting at the east side of the south door of the Senate Chamber. Those occupying galleries west of the Diplomatic Gallery will proceed by the west stairway to the south side of the Senate Chamber, the right of the line halting and resting at the west side of the south door of the Senate Chamber. When the rear of the column from the Senate floor shall have passed, those on the east of the south door will follow, and when they shall have passed, those on the west side of said door will follow.

After the occupants of the galleries have proceeded to the platform, employees of the Senate, Supreme Court, House of Representatives, and Architect's office will be admitted to seats on the platform.

While the Senators-elect are being sworn in and the procession formed, the members of the press, in a body, will proceed down the west steps leading to the gallery, through the rotunda to the seats reserved for them on the platform.

PROCEEDINGS ON THE INAUGURAL
PLATFORM.

ON REACHING the platform the President, the President-elect, will take the seat reserved for him, the Chief Justice on his right and the Sergeant-at-Arms of the Senate on his left.

The Committee of Arrangements will occupy seats next to and behind the President.

Ex-Presidents, ex-Vice-Presidents, and Associate Justices of the Supreme Court, the Vice-President, Secretary, Members of the Senate, and ex-Senators will occupy seats on the right.

The retiring Members of the House and Members-elect will be seated on the right of the President next to and behind the Senate.

The Diplomatic Corps will occupy the seats on the left of the President. Governors of States and Territories, Heads of Departments, the Lieutenant-General Commanding the Army, the Admiral of the Navy, and the officers of the Army and Navy who, by name, have received the thanks of Congress, will take seats on the left of the President.

Such other persons as are included in the preceding arrangements will occupy the residue of the platform.

When all are assembled, the oath of office will be administered to the President-elect by the Chief Justice, or, in his absence, by the senior Justice present.

The President will then deliver his Inaugural Address.

On the conclusion of the Address, the Members of the Senate, preceded by the Sergeant-at-Arms, Vice-President, and the Secretary, will return to the Senate Chamber, and the President, accompanied by the Committee of Arrangements, will proceed to the Executive Mansion.

All doors of the rotunda will be closed and passageways leading thereto will be kept clear. No person will be permitted to pass from the House wing through the rotunda except Members, Members-elect, and the officers of the House.

All entrances to the Senate wing (except the two before mentioned) will be closed the night of March 3 and be kept closed until after the inaugural ceremonies. All persons having the right of admission will be admitted ONLY at the Senate bronze door and at the door under the arch beneath the bronze door.

The Sergeant-at-Arms of the Senate is charged with the execution of these arrangements.

M. A. HANNA,
JOHN C. SPOONER,
JAMES K. JONES,
J. G. CANNON,
JOHN DALZELL,
THOS. C. MCRAE,

Committee of Arrangements.